

MONTHLY MEMBERSHIP PROGRESS REPORT

District 11 D2

Results as of: 5/31/2026

GMT:

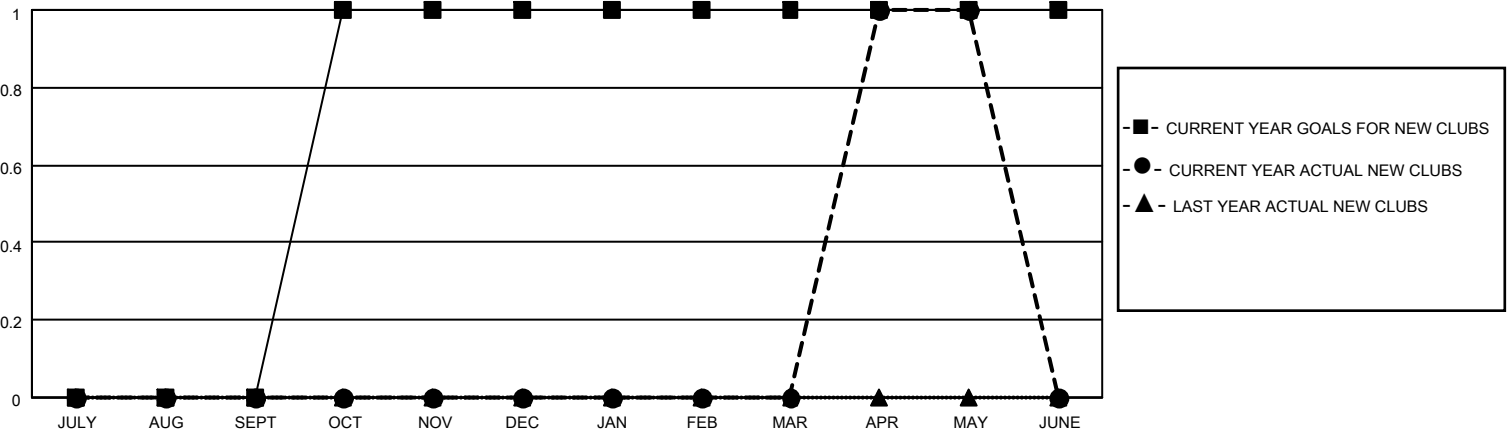
LOCATION MICHIGAN

GMT CA

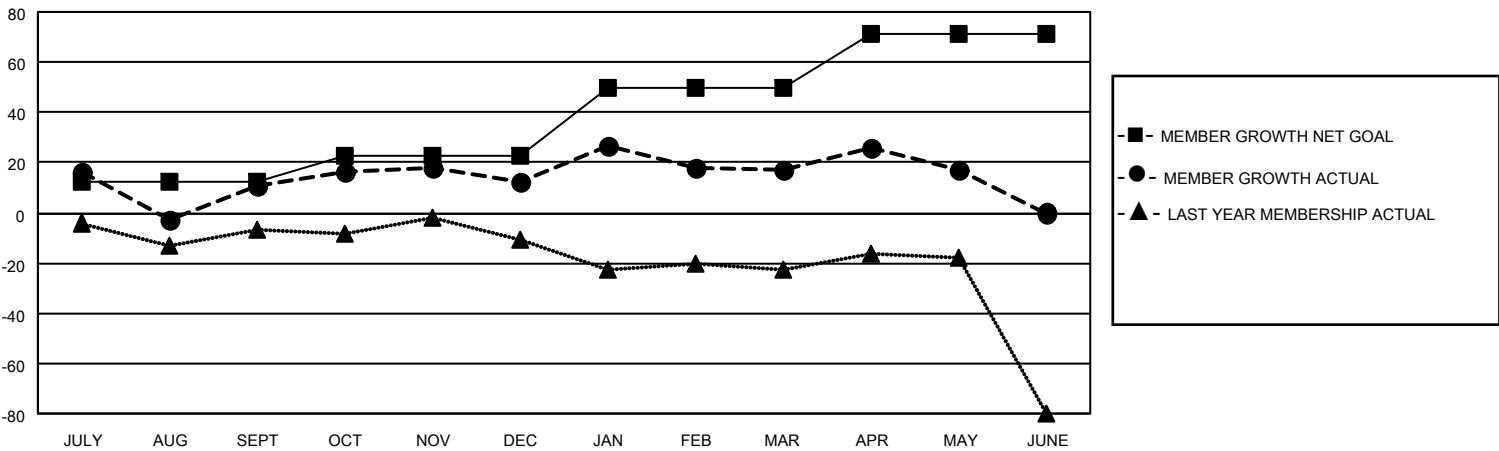
Clubs			
RESULTS FOR 2025-2026			
QUARTER	NEW CLUB GOAL	NEW CLUBS	DROPPED CLUBS
JULY/AUG/SEPT	0	0	1
OCT/NOV/DEC	1	0	1
JAN/FEB/MAR	0	0	0
APR/MAY/JUNE	0	1	0

Members			
RESULTS FOR 2025-2026			
QUARTER	MEMBER GROWTH NET GOAL	MEMBER GROWTH ACTUAL	DROPPED MEMBERS ACTUAL (including transfers)
JULY/AUG/SEPT	12	48	34
OCT/NOV/DEC	11	31	26
JAN/FEB/MAR	27	47	40
APR/MAY/JUNE	21	57	52

GOALS AND ACTUAL NEW CLUBS CUMULATIVE



GOALS AND ACTUAL MEMBERS CUMULATIVE



DROPPED CLUBS: 2

28 CLUBS OF 46 ADDED 1 OR MORE NEW MEMBERS

GENDER DISTRIBUTION

MALE 816 (69.68%)
FEMALE 354 (30.23%)

DROPPED MEMBERS

DECEASED	7
CLUB CANCELLED	1
OTHER	144
TOTAL	152

[CLICK HERE FOR CUMULATIVE MEMBERSHIP DATA](#)

TOTAL FAMILY UNIT MEMBERS	175
FAMILY MEMBERS PAYING HALF DUES	89